

## **Augustana College Report 2015**

More than 154 years ago, Augustana's roots were formed as a college of the Lutheran church.

Today, that foundation remains strong and continues to guide us in our daily work to inspire students to pursue their talents and passions and to engage faith.

Augustana has much to celebrate and much for which to be thankful.

We are thankful for the 15,000 alumni, parents, friends, churches and organizations who supported the recently-completed Momentum Augustana Campaign, whose gifts totaled more than \$121 million. Our desire to build an "Augustana Like Never Before" has allowed us to grow the endowment, fund new academic programming, increase annual giving and enhance our facilities.

Right now on the corner of 33<sup>rd</sup> and Summit Ave on campus, you will see the \$35 million construction of the Froiland Science Complex rising up. Phase one of the project, a 41,000-square-foot addition to the existing Gilbert Science Center, will open in December 2015.

Late last year, we unveiled Horizons: 2019, the strategic plan to lead Augustana through the next five years and beyond.

We are excited to share with you the five major goals of this plan:

- Serve more students and foster their success.
- Offer substantive and innovative educational experiences.
- Cultivate strategic partnerships.
- Steward human, physical and financial resources.
- Pursue greater brand awareness.

We believe these goals will help us inspire even more meaningful experiences in our students and create graduates who are better equipped to lead exceptional lives rooted in service to others.

Progress is already being made on a number of these goals. New graduate programs in professional accountancy and genetic counseling are in development and enrollment in our current master's programs for education and sports administration are increasing. When Augustana's new master's program in genetic counseling launches next year, it will become only the 32nd program of its kind in the U.S. and the only one in South Dakota.

Our graduates are also thriving as evidenced by our 99 percent placement of recent 2014 graduates who are pursuing graduate or professional school or have entered the workforce in areas related to their major or chosen field of study.

We value our partnership with the South Dakota Synod as member congregations encourage their young people to enroll here and as we are blessed with philanthropic support from across the Synod. There is much more to accomplish as Augustana pursues its ambitious plans for the future. As always, we are grateful for your prayers and personal words of encouragement.

God bless the proceedings of your Assembly.

Rob C. Oliver

President



# Chapel In The Hills

April 15, 2015

South Dakota Synod of the ELCA,

The Chapel in the Hills is a 501(c)(3) nonprofit corporation formed to maintain and operate the Chapel in the Hills. It is considered a Special Ministry of the Synod and the Chapel is an ELCA church building. The Chapel and grounds are open to visitors from May 1st to September 30th and during special programs and services the remainder of the year.

Each year we see 20,000 to 25,000 visitors from all over the United States and the world. As a church, Chapel in the Hills offers a unique opportunity for evangelism and display of our Lutheran traditions.

As a non-profit corporation much of our funding depends on the generosity of donors. Both donors who visit each year and donors who wish to support the long term goal of making this beautiful and unique church available to South Dakotans and people from all over the world for generations to come.

This past year we performed 79 weddings and 1 memorial service. We had an increase in bus traffic with 38 scheduled bus tours and 4 to 5 additional unscheduled tours. We continued Vesper services. In addition we offered a special Memorial Day service and Advent service. We continue to seek ways to offer services to the community.

Maintenance continues to be a major concern. A water line broke this winter in the gift shop and flooded much of the building. This was another of those unexpected setbacks that prevented our opening during the Christmas season.

Two Boy Scout chose the Chapel to do their Eagle Scout projects. It is always a blessing when groups or individuals choose to volunteer time and resources to maintain this beautiful property. We have also enjoyed a close relationship with YouthWorks. Each year youth groups from the Midwest come to Rapid City and perform service projects for local non-profit organizations and we are pleased to be one of the recipients. Also this year we have had a number of families who homeschool their children come to visit and learn about the Chapel, Scandinavian immigration, and Norwegian history.

This year the organ donated from Calvary Lutheran Church will be installed and we are looking forward to having a complete organ for services and weddings. As with many things at the Chapel, after 46 years repairs and upgrades need to be made. Speaking of which, we are beginning to prepare for 2019 and the 50th anniversary of Chapel in the Hills.

Much has changed at the Chapel in the past 46 years. We are looking forward to continuing to strengthen our relationship with the South Dakota Synod, the community and our visitors. It is important to us to remember why the Chapel was built and the legacy we have been left. We ask all the churches in the Synod to pray for our ministries and our long-term success.

The peace of the Lord be with you,

Craig Lewis, Manager, Chapel in the Hills

## **2014 ELCA annual report: The Good Samaritan Society**

As the nation's largest not-for-profit provider of senior services and housing, The Evangelical Lutheran Good Samaritan Society has always sought to create environments where people are loved, valued and at peace.

The Good Samaritan Society was founded in 1922 and opened its first care center in 1923 in Arthur, N.D. Today, the Good Samaritan Society operates in 24 states at more than 240 locations with its headquarters in Sioux Falls, S.D.

The organization continues to evolve to meet the needs and desires of residents, staff members and communities it serves and is dedicated to supporting well-being through innovative products and services for older adults and their families.

In 2014, the Good Samaritan Society:

- Was selected to participate in a project focusing on access to healthcare services in rural communities an improving management of care as patients transition from one healthcare setting to another. Funding comes through an \$8.8 million award from The Center for Medicare & Medicaid Innovation (CMMI) given to Avera eCARE in Sioux Falls. Ten Society locations were picked to be part of the project.
- Hosted the National Advisory Committee on Rural Health and Human Services at Society locations in Pipestone, Minnesota, and Howard, South Dakota. The advisory committee will use insights and information gathered at the meetings to form recommendations in a report on rural healthcare challenges and opportunities.
- Continued to grow its services, especially through post-acute rehab; home and community based services; and Hospice.
- Collaborated with Verizon Wireless in a project to test technology that connects individuals who are homebound with the places and events they love. The Windows to the World program would give seniors the ability to attend family gatherings, worship services and other events through virtual technology.
- Awarded grants totaling \$100,000 through its Social Accountability program. The grants help Society locations meet community needs through donations to food banks, transportation programs for seniors and other projects.
- Organized mission trips to Colombia and Bangladesh, two of three locations the Society supports through its Project Outreach program. The mission teams visited Soacha, an impoverished community south of Bogota; and LAMB hospital in Bangladesh.

## **Heartland Ephphatha Ministries**

Our Mission is to make worship, Bible study, and fellowship opportunities available to all people in South Dakota and Southwest Minnesota who are Deaf and hard of hearing and their hearing families and friends regardless of denomination or affiliation. We have made Peace Lutheran our worshipping home since 1997 and have felt welcomed. Jason and Sarah Andera act as co-directors for this ministry.

Members of Heartland Ephphatha have been active with mission trips, church council, service projects and anything else that hearing people do at Peace Lutheran thanks to this wonderful ministry. Over the past 12 months our ministry has put three people on the national board for deaf ministry in the ELCA. We are doing big things and are a very active group.

In the future we plan to focus our efforts on outreach to the unchurched deaf population in South Dakota. We will hold events to make ourselves known in the community. We will also be working closely with our national organization of deaf churches to bring more opportunities and access for deaf Lutherans.

## Lutheran Planned Giving in South Dakota

**Lutheran Planned Giving of South Dakota (LPG of SD) was formed in May of 2003 with the following mission:**

*We will help people of God make lifetime financial gifts to the South Dakota ministries who are members of Lutheran Planned giving and create a rising tide of financial support for all ELCA ministries.*

Lutheran Planned Giving partner ministries are:

---

Augustana College, Sioux Falls, SD	Bethel Lutheran Home, Madison
Bethesda Home of Aberdeen, SD	ELCA Foundation, Chicago IL
Heartland Ephphatha, Sioux Falls, SD	Luther Seminary, St. Paul, MN
Lutheran Campus Ministry	Lutheran Social Services of SD
Lutherans Outdoors in SD	Prison Congregations of America
St. Dymas, Sioux Falls, SD	South Dakota Synod, Sioux Falls, SD

---

Lutheran Planned Giving of South Dakota is available to assist congregations in establishing and growing mission endowment funds with an emphasis on supporting and enhancing all the ministries of the church both locally and worldwide through bequests and other planned gifts. They can provide educational information to congregations, and their members through seminars on the importance of wills, estate and charitable gift planning.

Kurt Osborne and Jim Schade are available to your congregation as a gift in itself with free no-obligation information seminars regarding the gift planning strategies. Congregation members will be able to come and hear information, ask questions, and set up personal one-on-one visits with LPG staff concerning the stewardship of their assets. At those visits members will discuss their intent, the options and the most helpful strategies regarding gift planning. We also are able to offer suggestions for other advisors to contact in order to bring additional expertise to best accomplish those wishes.

**Lutheran Planned Giving of South Dakota is now offering Interactive Planned Giving Websites to the congregations of the SD Synod!**

GiftLegacy's planned giving websites use your organization's branding and include motivating donor stories of giving, regularly updated articles, an online Wills Planner, personal gift illustrations, Advisor information and more. Request a personal demonstration and view of the power of the GiftLegacy system! These features and more are made possible to your congregation through a partnership of Lutheran Planned Giving and Crescendo Gift Planning services.

### **Weekly E-newsletters**

GiftLegacy provides the GiftLegacy E-newsletter for donors, and the GiftLaw E-newsletter for financial professionals. Each E-newsletter contains your branding, and includes timely articles, impactful stories and multiple links directing readers to your website. You may personalize the e-newsletter for the most impact. These features and more are available for \$250.00 per year. This fee is payable to Crescendo.

To look online at the resources available, please visit [www.lpgsd.org](http://www.lpgsd.org).

To arrange for a demonstration, or for more information, please contact Kurt Osborne [kosborne@sdsynod.org](mailto:kosborne@sdsynod.org) 605 940-7524, or Jim Schade [jschade@sdsynod.org](mailto:jschade@sdsynod.org) 605 940-2363.

# Lutheran Social Services of South Dakota Touching People's Lives 56,212 Times Last Year

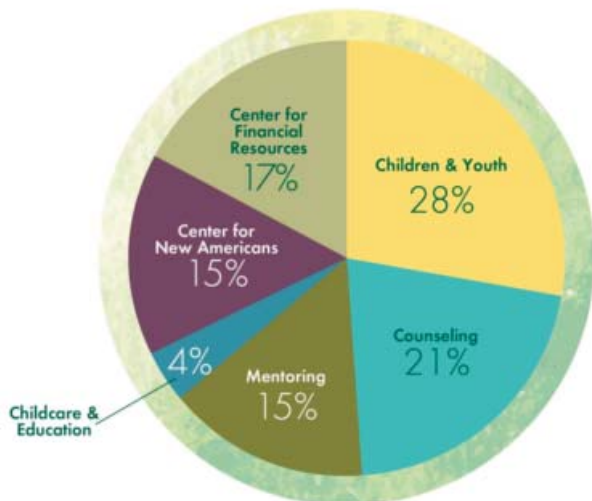


## Dreams Do Come True

Amy's mom was a meth user and exposed Amy to alcohol, drugs and a disruptive home environment for much of her early childhood. Eventually Amy went to live with her grandma. Her grandma loved her, but she couldn't handle Amy's defiance and anger. Amy disrespected authority, didn't feel any rules applied to her and the choices she made lead to running away and truancy. When Amy was placed in DSS care, she admitted to using meth daily.

Amy successfully completed a chemical dependency program and was admitted to LSS New Beginnings Center in Aberdeen for follow-up. New Beginnings offers group care and treatment in a residential setting. When she came to LSS, Amy was guarded and she trusted no one. As time went on she began to build relationships with peers and caring workers. She started to open up and believe in herself. She set goals and would openly talk about going to college. One step at a time, she began to achieve her goals. She became eligible to attend public high school and obtained a job. After one year, Amy was successfully discharged from New Beginnings and returned to her grandma's home. Amy continues to make good choices and it was a proud day when she began college as she had dreamed. Today, Amy continues to work on her college degree and lives independently.

## How Your Gift Serves



## 2014 Highlights

LSS began Kinship Services statewide. Through this program, LSS completes home studies for the Department of Social Services. This assists DSS in placing children who are in SD's child welfare system with responsible relatives who have a bond or tie with the child and/or the child's parents.

Demand for Center for Financial Resources services remains high. Last year, CFR served more than 3,800 individuals through financial counseling and more than 4,800 individuals through financial education and debt management programs.

LSS touched more than 5,200 lives of children and their family members last year through residential care, foster care, adoption, pregnancy counseling, mentoring, childcare & education and other services.

More than 5,000 people were served through counseling services last year; 50% served had incomes below \$30,000 (23% below \$10,000). Economic conditions continue to make access to behavioral health care even more challenging.

LSS was on site in Wessington Springs following the tornado and responded to the flooding in Canton and Lincoln & Union Counties in 2014. In response to calls for assistance from more than 1,300 families, LSS organized more than 1,000 volunteers who provided more than 23,000 hours of volunteer service.

LSS Childcare & Education Services began offering individualized care for youth with special needs and their siblings through its Here4Youth program.

LSS launched "Better Together", a program designed to improve quality of life for older adults by connecting them with trained volunteers. They will spend four hours per month together going on outings, talking, pursuing hobbies and other relationship-building activities.

LSS opened the Arise Youth Center, Evening Report Center & Shelter Care programs to provide alternatives to detention for youth referred by local law enforcement in Pennington County.

Follow LSS through our Blog, Facebook, Twitter and Pinterest. Just go to the LSS website for links to various social media: [www.LssSD.org](http://www.LssSD.org)

## Imagining innovative ways forward in educating leaders for Christian communities

In my first year at Luther Seminary, I've been building relationships, listening carefully and identifying strengths. This has made it clear to me that we are in the process of becoming the kind of nimble, innovative teaching and learning institution that will lead to long-term sustainability for the mission of the seminary.

I am excited about what I see happening at Luther Seminary.

- **Both applicants and admits are on the rise.** The inquiry pool for the 2015-16 academic year is off to a solid start. We've seen a significant increase in applications and admits over last year for both the Master of Arts and Master of Divinity programs. Our number of presidential scholarship applications has also far exceeded our expectations. We are hopeful that these are positive indications that prospective students have confidence in the type of education Luther Seminary provides.
- **Our students are enjoying the flexibility of our new curriculum.** It's an exciting development in seminary education, and one that took years of collaboration among faculty and staff. This curriculum continues to equip our leaders to meet the changing needs of the church and world.
- **We see a wealth of potential in our Lifelong Learning programs.** Nearly 4,000 leaders in ministry—in multiple denominations, across the country and in Canada—are served annually. For the sake of church leadership we need to encourage more men and women to join us by both enrolling in seminary and engaging in lifelong learning opportunities.

We can't do any of this without your help. We want to say thank you for all the support you provide. Keep praying for us, sharing our story, supporting us financially and sending new students our way. Thank you for partnering with us.



Robin Steinke, President

*Luther Seminary educates leaders for Christian communities called and sent by the Holy Spirit to witness to salvation through Jesus Christ and to serve in God's world.*

### In your synod...

#### Financial Support

Synodical and churchwide support accounted for 7 percent of Luther Seminary's 2013-14 budget.

**During the 2013-14 fiscal year, the South Dakota Synod provided direct financial support of \$67,889.**

#### Students

Thank you for sending and supporting the education of Luther Seminary students.

- There are 18 students from your synod enrolled at Luther Seminary.
- There are five interns serving in your synod.

#### Seminary Finances

- Of Luther's operating income, 58 percent comes from private gifts and grants.
- Of Luther's operating expenses, 54 percent goes toward student instruction and institutional support.

#### Board of Directors

Roald Eidsness

#### Alumni

There are 253 Luther Seminary alumni living in the South Dakota Synod.

Welcomes all to explore & experience Christ's love in community and creation.



**In 2014, the camps and year-round retreat centers of LOSD served 18,660 people through summer programs and year-round retreats.**

## TOGETHER IN MINISTRY

In partnership with congregations, we continue to seek out all who wish to come and experience the Christ centered programs of your camps.

Thanks to your support, in 2014 we were able to extend our ministry to include:

- Families from the Sioux Falls Banquet at Joy Ranch
- Children from Pine Ridge at Outlaw Ranch
- Sudanese families from Fargo at NeSoDak
- Children from Pueblo de Dios, Sioux Falls at NeSoDak, Joy Ranch, and Day Camp
- Vacation experiences for people with intellectual disabilities at Joy Ranch

Congregations created and now sustain Lutherans Outdoors. Through your direct financial support, you are the lifeblood of this ministry and open the doors to all. Thank you!



*Layne D. Nelson*

Rev. Layne Nelson | Executive Director



OUTLAW RANCH



JOY RANCH



NESODAK

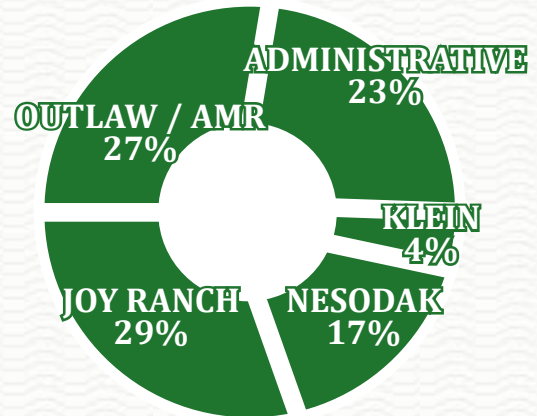


KLEIN RANCH

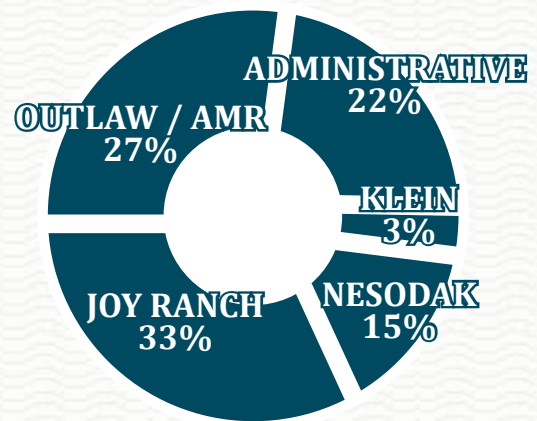
## 2014 FINANCIAL STATEMENT\*

A full financial report from the auditor, Thurman, Comes & Foley, is available in the Lutherans Outdoors in SD Inc. administrative office. Please call 605-274-5326

### REVENUE - \$2,461,931



### EXPENSES - \$2,594,871



*\*As of print date numbers are unaudited. Does not include depreciation (\$530,177), in-kind Gifts, capital campaign income and expense. As of January 31, 2014 the balance in the Lutherans Outdoors endowment is \$1,377,510.*



**St. Dysmas  
Annual Report  
SD Synod Assembly  
May 29-30, 2015**

St. Dysmas is excited to be celebrating our 25th year as an ELCA congregation this year and are excited to have you join us. Our first worship service was Ascension Day, May 24 1990. We began our year long celebration on Ascension Day, May 14 with a festive worship service where Bishop David Zellmer delivered the sermon.

We give thanks to God for the generous and faithful support of SD congregations and individuals. Our ministry has grown and flourished with God's guidance and your support.

We invite you to celebrate with us this year and we will culminate with a celebration at the 2016 Synod Assembly.

Please join us by learning, supporting, or visiting—or all three!

**Learning:**

Form a group in your congregation to:

- Discuss the ELCA social statement, "*The Church and Criminal Justice: Hearing the Cries,*" (free online or \$1.25 for 5 copies)
- Read and discuss: *Life on the Outside: The Prison Odyssey of Elaine Bartlett*
- Read and discuss: *Down in the Chapel: Religious Life in an American Prison*
- Invite Pastor Bob Chell from St. Dysmas, Mary Mortenson with Prison Congregations of America or another resource person to visit your congregation
- Choose your own guest or book to learn more about Prisons and prison ministry

**Supporting:**

- Make Christmas Fudge for Inmates in Dec. (directions & recipe at [www.stdysmas.com](http://www.stdysmas.com))
- Have children make Christmas cards for inmates (directions & recipe at [www.stdysmas.com](http://www.stdysmas.com))
- Collect yarn for inmates to knit caps for those in need
- Thrivent members can lead a Thrivent Action Team and secure \$250 in seed money for these or other activities.
- Make St. Dysmas the recipient of a special offering or fund raiser

**Visiting**

- Bring a group to worship with our congregations at
- South Dakota State Penitentiary in Sioux Falls, SD
- Mike Durfee State Prison in Springfield, SD
- Coordinate with congregations in your area for those incarcerated in your county.

This isn't a definitive list. Develop your own ideas or contact us for more ways to celebrate with us.

St. Dysmas  
[www.stdysmas.com](http://www.stdysmas.com)  
(605) 338-1735  
1300 E. 10th St.  
Sioux Falls SD 571103